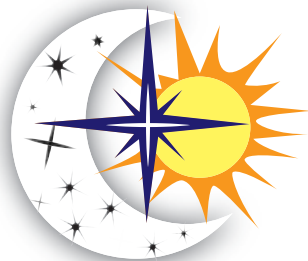




OSMAN LED

Let's Build the Future with Innovation



OSMAN

Powertec & Engineering

A Sister Concern of 2B Tex Corporation

www.2btexcorp.com

What's Special about *OSMAN LED*

We take immense pleasure in introducing to you *OSMAN LED* Lighting Technology , concern of 2B Tex Corporation, a Bangladeshi well established company in the business of Importing, exporting, supplying and installation of LED lighting Fixtures.

We understand today's global focus on power saving which reflects directly On the survival of natural resources, therefore we concentrated our scope Of work on well manufactured high-efficient LED products. Supported by a Well known partners such as Philips, Pelsan, Dialight and Fiberli.

We undertake bulk operations of street lighting, factories, warehouses, Offices, schools, airports and all kinds of construction projects. Keeping and Carrying out a true commitment to improve and lead the lighting business In the Kingdom. We will be honoured to arrange a personal introductory session to further Emphasize on our company's capabilities whenever it is needed.

Let's Build the Future with Innovation

OSMAN LED offers a diverse selection of industrial LED lighting that helps brighten your entire industrial landscape. LED lighting renders colors more accurately with less heat, gains efficiency at lower temperatures and saves up to 70% on energy costs. LED light fixtures are the perfect solution for a broad range of industrial and high bay, street lighting projects, including food processing, refrigerated spaces, warehouses, gymnasiums, natatoriums, cafeterias, high ceiling retail, auditoriums and convention centers.

Our Sister Concerns are..

Osman Powertech & Engineering, 2B Tex Chemicals and Dyes, Osman Powertech Professional Lighting, 2B Tex Construction, Abdul Latif Agro Farm and Intense Yarn.

LED BULBS



OPT-01



OPT-02



OPT-03



OPT-04



OPT-05



OPT-06



OPT-07



OPT-08



OPT-08

Features

Available Wattages	: 1W, 3W, 5W, 7W, 9W, 13W, 15W, 18W, 20W, 40W
Working Voltage	: 85 - 265 VAC
Rated Life	: 30,000 Hrs / 50,000 Hrs
Power Factor :	: >0.5 ~ > 0.95
Color Temperature	: 3000K to 7000K
Efficacy	: 90 > LM/W
CRI	: ≥ 80
LED Chips	: Osram / Bridgelux / Sanan / Epistar
LED Driver	: Meanwell / Philips / Done / IEC Standard.
Lumen Maintenance	: 98% Up to 10,000 Hrs
Housing Material	: PC Cover Shell, PC / PBT Body, Aluminium Heat Sink
Cover	: Milk White
Base	: B22, E27



LED TUBE LIGHT



OPTE-LTL-01

OPTE-LTL-01i

OPTE-LTL-02

OPTE-LTL-03

LINEAR TUBE LIGHT(CATA)



Size : 4Ft

Size : 2Ft

Size : 1Ft

OPTE-LEXTS-01

TUBE LIGHT SHADE



OPTE-TLS-01

OPTE-TLS-02

Features

Available Wattage	: LED LINEAR- 10W, 20W, 40W, 60W
Working Voltage	: 85 - 265 VAC
Rated Life	: 30,000 Hrs / 50,000 Hrs
Power Factor	: > 0.5 ~ >0.95
Color Temperature	: 3000K to 7000k
Efficacy	: 100LM / W to 120 LM/W
CRI	: ≥ 80
LED Chips	: Epistar
LED Driver	: Meanwell / Philips/ Done / IEC Standard
Housing Material	: PC & Aluminium
Available Sizes	: 1ft, 2ft, 3ft & 4ft.



OZMAN LED

02



CUSTOM MADE LED LINEAR LIGHT FIXTURE

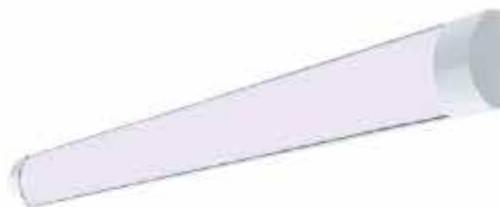
Features

Customizable as per demand.

Manufacturing Lead time

Existing model : 2 to 3 Weeks.

Custmized model : 90 to 120 Days



OPTE-LEXTS-01



OPTE-LEXTS-02



OPTE-LEXTS-03



OPTE-LEXTS-04



OPTE-LEXTS-05



03



OSMAN LED

Features

Available Wattages	: 3W, 6W, 7W, 9W, 12W, 16W, 18W, 24W, 36W, 40W, 48W, 60W, 72W
Working Voltage	: 85 - 265 VAC
Available Shapes	: Round, Square, Rectangular
Type	: Surface, Conceal
Rated Life	: 30.000 Hrs / 50.000 Hrs
Power Factor	: > 0,5 ~ > 0,95
Color Temperature	: 3000k to 7000K
Efficacy	: 90 LM/W
CRI	: ≥ 80
LED Chips	: Osram / Bridgelux \ Sanan \ Epistar.
LED Driver	: Meanwell / Philips / Done / IEC Standard
Housing Material	: Alumnum, Optical Grade Clear Cell Cast, PMMA Acrylic. Contain an evenly spread laser engraved dot matrix across the surface of the acrylic, Optional light diffusion film and reflector.

LED PANEL LIGHT(Surface & Conceal)



OPTE-LSRPL-01



OPTE-LSSPL-01



OPTE-LCRPL-01



OPTE-LCRPL-02



OPTE-LCRPL-03



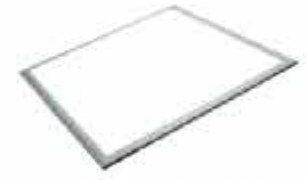
OPTE-LCSPL-01



OPTE-LCSPL-02



OPTE-LCSPL-03



OPTE-LPL-01



OPTE-LPL-02



OPTE-LPL-03



OPTE-LPL-04



LED CONCEAL SPOT LIGHT



OPTE-CSL-01



OPTE-CSL-02



OPTE-CSL-03



OPTE-CSL-04



OPTE-CSL-05



OPTE-CSL-06



OPTE-CSL-07



OPTE-CSL-08



OPTE-CSL-09



OPTE-CSL-10



OPTE-CSL-11



OPTE-CSL-12

Features

Available Wattages	: 3W, 5W, 7W, 9W, 12W, 15W. 18W, 20W, 24W, 30W.
Working Voltage	: 85-265 VAC
Front Cover	: Tempered Glass. Clear, Middle - Frosted. Frosted, Lens.
Rated Life	: 30,000 Hrs / 50,000 Hrs.
Power Factor	: > 0.5 ~ > 0.95
Color Temperature	: 3000K to 7000K
Efficacy	: 90LM/W to 120 LM/W
CRI	: ≥ 80
LED Chips	: Osram / Bridgelux / Sanan / Epister.
LED Driver	: Meanwell / Philips / Done / IEC Standard.
Housing Material	: Aluminium & Glass.



05



OZMAN LED

LED TRACK SPOT LIGHT

Features

Available Wattages	: 5W, 7W, 10W, 12W, 15W, 20W, 25W, 30W, 40W.
Working Voltage	: 85 - 265 VAC
Front Cover	: Tempered Glass, Clear. Middle-Frosted, Frosted Lens.
Rated Life	: 30,000 Hrs / 50,000 Hrs
Power Factor	: > 0.5 ~ > 0.95
Color Temperature	: 3000K to 7000K
Efficacy	: 90LM / W to 120 LM / W
CRI	: ≥ 80
LED Chips	: Osram / Bridgelux / Sanan / Epistar.
LED Driver	: Meanwell / Philips / Done / IEC Standard.
Housing Material	: Aluminium
Beam Angle	: < 10° to > 120°



OPTE-TSL-01



OPTE-TSL-02



OPTE-TSL-03



OPTE-TSL-04



OPTE-TSL-05



OPTE-TSL-06



OPTE-TSL-07



OPTE-TSL-08



OPTE-TSL-09

LED SURFACE DOWN LIGHT



OPTE-SDL-01



OPTE-SDL-02



OPTE-SDL-03



OPTE-SDL-04



OPTE-SDL-05



OPTE-SDL-06



OPTE-SDL-07



OPTE-SDL-08



OPTE-SDL-09



OPTE-SDL-10



OPTE-SDL-11



OPTE-SDL-12

Features

Available Wattages	: 3W, 5W, 6W, 7W, 9W, 12W, 15W, 20W, 30W
Working Voltage	: 85 - 265 VAC
Front Cover	: Tempered Glass, Clear, Middle - Frosted, Frosted, Lens.
Rated Life	: 30,000 Hrs / 50,000 Hrs
Power Factor	: > 0.5 ~ > 0.95
Color Temperature	: 3000K to 7000K
Efficacy	: 90LM/W to 120 LM / W
CRI	: ≥ 80
LED Chips	: Osram / Bridgelux / Sanan / Epistar.
LED Driver	: Meanwell / Philips / Done/ IEC Standard.
Housing Material	: Aluminium.



Features

Available wattages	: 18W, 24W, 36W, 72W
Working Voltage	: 85 - 265 VAC
Rated Life	: 30,000 Hrs / 50,000 Hrs
Efficacy	: 90LM / W to 120 LM / W
Power Factor	: > 0.5 ~ > 0.95
Color Temperature	: 3000K to 7000K
CRI	: ≥ 80
LED Chips	: Osram / Bridgelux / Sanan / Epistar.
LED Driver	: Meanwell / Philips/ Done / IEC Standard.
Housing Material	: Aluminium, Tempered Glass
Protection Grade	: IP65 / IP66 / IP67

LED WALL WASHER LIGHT



OPTE-BWW-01



OPTE-BWW-02



OPTE-BWW-03



OPTE-BWW-04



OPTE-BWW-05



OPTE-BWW-06



OPTE-LWW-01



OPTE-LWW-02



OPTE-LWW-03

LED UNDER WATER LIGHT



OPTE-UWL -01



OPTE-UWL -02



OPTE-UWL -03



OPTE-UWL -04



OPTE-UWL -05



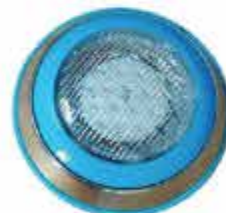
OPTE-UWL -06



OPTE-UWL -07



OPTE-UWL -08



OPTE-UWL -09

Features

Available Wattages	: 6W, 9W, 12W, 18W, 24W
Working Voltage	: 85-265 VAC
Rated Life	: 30,000 Hrs / 50,000 Hrs
Power Factor	: > 0.5 ~ > 0.95
Color Temperature	: 3000K to 7000K / RGB
Efficacy	: 90LM/W to 120 LM/W
CRI	: ≥ 80
LED Chips	: Osram / Bridgelux / Sanan / Epistar
LED Driver	: Meanwell / Philips / Done / IEC Standard.
Housing Material	: Stainless Steel, Tempered Glass
IP Grade	: Ip 68 (3ft from surface Of the Water)



LED STAIR & FOOT LIGHT



OPTE-STRL-01



OPTE-STRL-02



OPTE-STRL-03



OPTE-STRL-04



OPTE-STRL-05



OPTE-STRL-06



OPTE-STRL-07



OPTE-STRL-08



OPTE-STRL-09

Features

Available Wattages	: 3W, 6W, 9W
Working Voltage	: 85 - 265 VAC
Available Shapes	: Round, Square
Rated Life	: 30,000 Hrs / 50,000 Hrs
Power Factor	: > 0.5 ~ > 0.95
Color Temperature	: 3000K to 7000K
Efficacy	: 90LM / W to 120 LM / W
CRI	: ≥ 80
LED Chips	: Osram / Bridgelux / Sanan / Epistar
LED Driver	: Meanwell / Philips / Done / IEC Standard.
Housing Material	: Aluminium, Plastic, SS
Protection Grade	: IP65 / IP66



LED SIGNS

Features

Available wattages	: 3W - 5W
Working Voltage	: 85 - 265 VAC
Rated Life	: 50,000 Hrs
Housing Material	: PC, Glass and Aluminium,
Backup Time	: 1 Hrs to 2 Hrs



OPTE- SE -01



OPTE- SE -01



OPTE-SE -01



OPTE- SE -01



OPTE- SE -01



OPTE-SE -01



OPTE- SE -01



OPTE- SE -01



OPTE-SE -01



Features

Available Wattages	: 5W, 10W, 15W.
Working Voltage	: 85 - 265 VAC
Height	: 1ft 5 inch, 2ft , 3ft.
Rated Life	: 30,000 Hrs / 50,000 Hrs
Power Factor	: > 0.5 ~ > 0.95
Color Temperature	: 3000 K to 7000 K
Efficacy	: 90LM / W to 120 LM / W
CRI	: ≥ 80
LED Chips	: Osram / Bridgelux / Sanan / Epistar.
LED Driver	: Meanwell / Philips / Done / IEC Standard.
Housing Material	: Aluminium Cast, Frosted Fiber
Protection Geade	: IP65 / IP66 / IP67

LED BOLLARD LIGHT



OPTE-LBL-01



OPTE-LBL-02



OPTE-LBL-03



OPTE-LBL-04



OPTE-LBL-05



OPTE-LBL-06



OPTE-LBL-07



OPTE-LBL-08



OPTE-LBL-09



OPTE-LBL-10



OPTE-LBL-11



OPTE-LBL-12



GARDEN POLE LIGHT



OPTE-GDPL-01



OPTE-GDPL-02



OPTE-GDPL-03



OPTE-GDPL-04



OPTE-GDPL-05



OPTE-GDPL-06



OPTE-GDPL-07



OPTE-GDPL-08



OPTE-GDPL-09



OPTE-GDPL-10



OPTE-GDPL-11



OPTE-GDPL-12

Features

Available Wattages	: 3W - 12W (LED) 11W - 23W (CFL)
Working Voltage	: 100 - 265 VAC
Base	: E - 14-27, B - 22.
Housng Material	: Aluminium, Glass.
Height	: Customizable.



Features

Available Wattages : 5W - 13WLED /
15W - 23W CFL
Housing Material : Glass, Plastic,
Aluminium, SS.
Base : E - 14-27, B - 22.

Gate Light Fixture



OPTE-GDL-01



OPTE-GDL-02



OPTE-GDL-03



OPTE-GDL-04



OPTE-GDL-05



OPTE-GDL-06



OPTE-GDL-07



OPTE-GDL-08



OPTE-GDL-09



OPTE-GDL-10



OPTE-GDL-11



OPTE-GDL-12



OPTE-GDL-13



OPTE-GDL-14



OPTE-GDL-15



OPTE-GDL-16



LED Strip & Neon Light

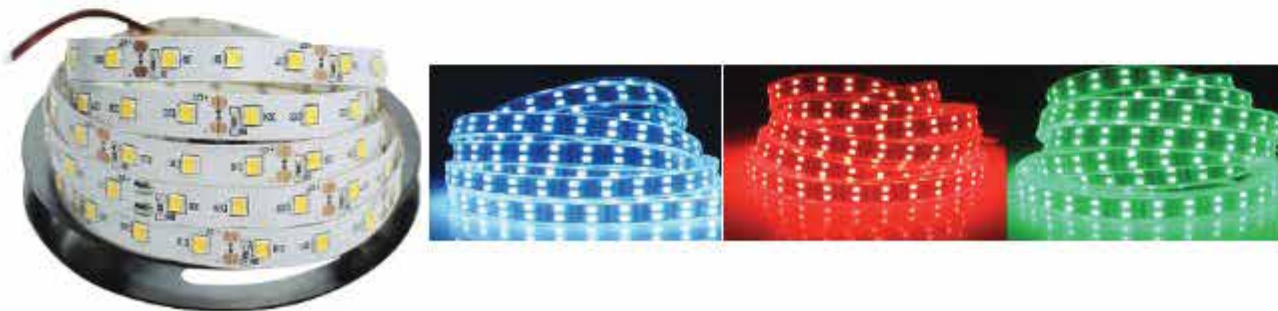


Features Indoor

Color	: Warm, White, RGB.
Protection Grade	: IP20
Input	: 24V / 12V (DC)
Cutting Length	: 50mm
Connector	: 24V / 10m, 12V / 5 m
Watt	: 15W / m
CRI	: ≥ 80 , ≥ 90

Outdoor

Color	: Warm, White, RGB.
Protection Grade	: IP65 , IP66, IP 67
Tube	: Silicon Tube
Input	: 24V / 12V (DC)
Cutting Length	: 50mm
Connector	: 24V / 10m, 12V / 5 m
Watt	: 15W / m
CRI	: ≥ 80 , ≥ 90



Features

Material : Aluminium, MS, SS,
Powder Coating,
Clear acrylic, Glass.

Bulb Base type : E - 14 - 27, B - 22

ACCESSORIES



LED COB FLOOD LIGHT



OPTE-FDL-01



OPTE-FDL-02



OPTE-FDL-03



OPTE-FDL-04

LED SMD FLOOD LIGHT



OPTE-FDL-05



OPTE-FDL-06



OPTE-FDL-07



OPTE-FDL-08

Features

Available Wattages	: 30W, 50W, 100W, 150W, 200W, 300W, 400W.
Working Voltage	: 85 - 265 VAC
Rated Life	: 30,000 Hrs / 50,000 Hrs
Available Shapes	: 90LM / W to 120 LM / W
Power Factor	: > 0.5 ~ > 0.95
Color Temperature	: 3000K to 7000K
CRI	: ≥ 80
LED Chips	: Osram / Bridgelux / Sanan / Epistar.
LED Driver	: Meanwell / Philips / Done / IEC Standard.
Housing Material	: Aluminium, Tempered Glass, Lens
IP Grade	: IP 65 / IP66
Operating Temperature	: - 10°C to 60°C.
Beam Angle	: > 120°



Features

Available Wattages : 30W, 50W, 100W, 150W,
200W, 300W, 400W.

Working Voltage : 85 - 265 VAC

Rated Life : 30,000 Hrs / 50,000 Hrs

Power Factor : > 0,5 ~ > 0,95

Color Temperature : 3000K to 7000K

Efficacy : 90LM / W to 120 LM / W

CRI : ≥ 80

Housing Material : Aluminium

LED Chips : Osram / Bridgelux

/ Sanan / Epistar.

LED Driver : Meanwell / Philips /

Done / IEC Standard.

LED HIGHBAY & LOWBAY LIGHT



OPTE-HBL-01



OPTE-HBL-02



OPTE-HBL-03



OPTE-HBL-04



OPTE-HBL-05



OPTE-HBL-06



OPTE-HBL-07



OPTE-HBL-08



OPTE-HBL-09



OPTE-HBL-10



OPTE-HBL-11



OPTE-HBL-12



OPTE-HBL-13



OPTE-HBL-14



OPTE-HBL-15



OPTE-HBL-16



Features

Available Wattages : 30W, 50W, 100W, 150W,
200W, 300W, 400W, 600W

Working Voltage : 85 - 265 VAC

Rated Life : 30,000 Hrs / 50,000 Hrs

Efficacy : 90LM/W to 120 LM/W

Power Factor : > 0.5 ~ > 0.95

Color Temperature : 3000k to 7000K

CRI : ≥ 80

LED Chips : Osram / Bridgelux

/ Sanan / Epistar.

LED Driver : Meanwell / Philips /
Done / IEC Standard.

Housing Material : Aluminium.
Tempered Glass, Lens

Protection Grade : IP 65 / IP 66 / IP 67

LED COB STREET LIGHT



OPTE-LSTL-01



OPTE-LSTL-02



OPTE-LSTL-03



OPTE-LSTL-04



OPTE-LSTL-05



OPTE-LSTL-06

LED SMD STREET LIGHT



OPTE-LSTL-05



OPTE-LSTL-06



OPTE-LSTL-07



OPTE-LSTL-08

STADIUM FLOOD LIGHT



OPTE-LHMFL-01



OPTE-LHMFL-02



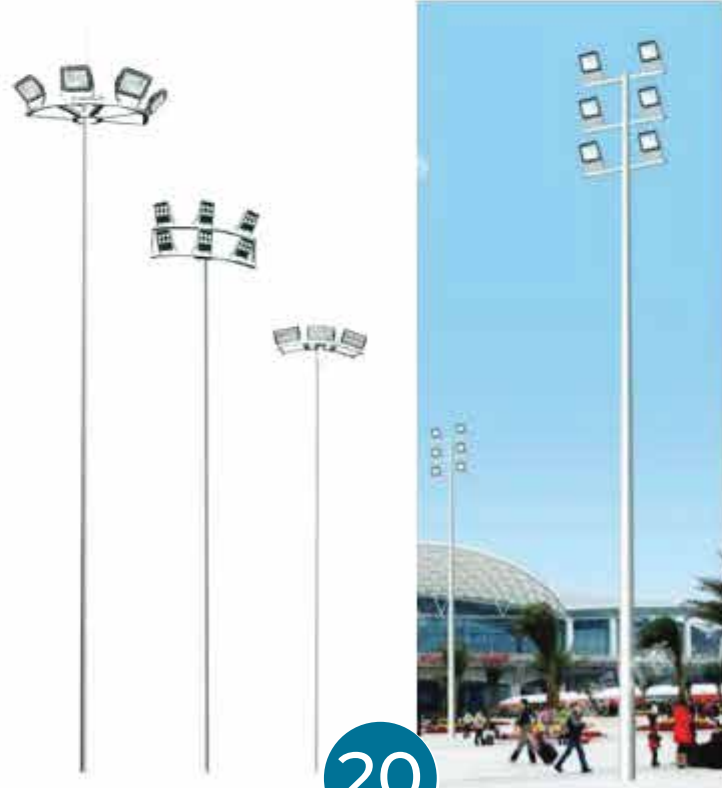
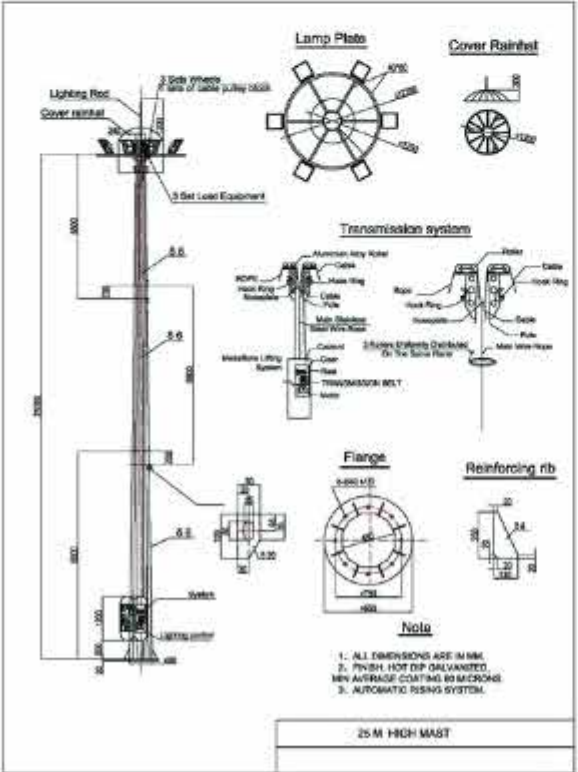
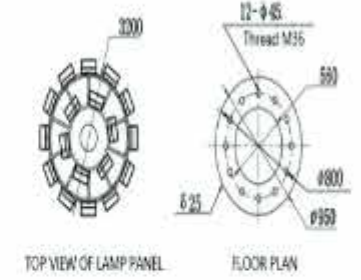
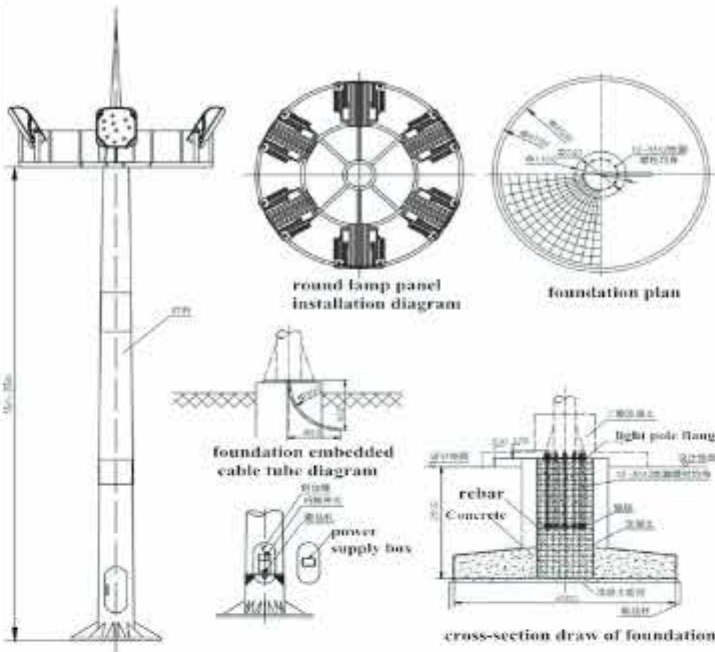
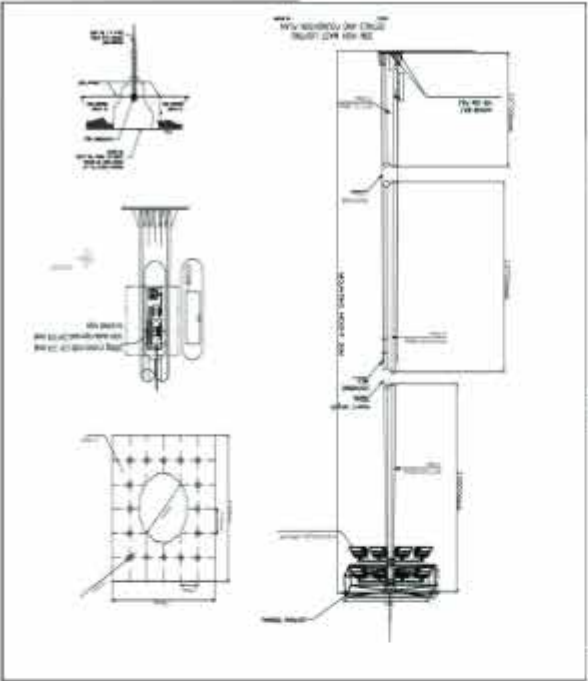
OPTE-LHMFL-03



OPTE-LHMFL-04



High Mast Light & Pole



PROFESSIONAL LIGHTING CONSOLES



Project Analysis

Understanding Our Clients and their needs and requirements is our prime focus before getting in to the detailed design processes. We try to come up with client and site-specific lighting solutions combining Exclusivity, Practicality and Cost-Effectiveness.



Detailed Drawing

Providing complete detailed drawings with AutoCad along with mood basics and concept basics for easy understanding by the client.



Lighting Design

Design lights for every space with respect to the interior, furniture and the all kind of activities that is getting to be done in that space. These lights are made based on understanding about all the specs and their requirements.



Material Assessment and Specification

Suggesting specific lighting fixtures for each space along with wiring, guidance, material specification and BOQ preparation.



Execution & Installation Guidelines

Providing complete guidance for interior and exterior lighting design execution and installation.

Let's Build the Future with Innovation





OSMAN LED

LIGHTING CATALOG



CE



OSMAN
Powertec & Engineering

House # 1/A, Road # 1/B, Nikunja-2, Dhaka-1229, Bangladesh
Tel : +8802-41040321, 01568-776230, 01722-952007
Email: info@2btexcorp.com, www.2btexcorp.com